

WideTEK® 24F

Fastest Large Format Flatbed

For documents up to 24 x 18 inches

Full color scan at 600 dpi in <4 seconds

**LARGE
DOCUMENT
SOLUTIONS**

Large Document Solutions

7318 S. Revere Pkwy., Suite A-1 • Centennial, CO. 80112

(303) 773-9015 • (866) 338-4464 toll-free

info@largedocuments.com • www.largeformatscanners.com



***Compact, elegant design, affordable
World's fastest DINA2+ flatbed with
solid scratch resistant glass top***

**Image
Access**

© 06_2021 / EN



- SCANS 24 x 18 INCHES, 11% MORE THAN DIN/ISO A2
- FADGI, METAMORFOZE, ISO 19264-1 COMPLIANT
- FULL SCAN IN LESS THAN 4 SECONDS
- SCRATCH RESISTANT GLASS PLATE ALLOWS SCANNING OVERSIZED ORIGINALS
- 1200 x 1200 DPI SCANNER RESOLUTION
- VIRUS PROTECTED 64BIT LINUX OPERATING SYSTEM
- INTEL I3 GEN.8, 240GB SSD, 8GB RAM
- GIGABIT TCP/IP NETWORK INTERFACE
- SUPPORTS SRGB, ADOBE RGB, NATIVE COLOR SPACES
- SMALL ENOUGH TO FIT ON ANY DESKTOP
- 7.5 INCH 1280*800 MULTITOUCH SCREEN FOR SIMPLIFIED OPERATION
- USB 3.0 PORT FOR WALKUP SCANNING
- AUTOMATIC CROP AND DESKEW
- REALTIME DISPLAY OF SCANNED IMAGES
- VIRTUAL RESCAN, MODIFY IMAGES WITHOUT RESCANNING
- EASY INSTALLATION VIA SCAN2NET® TECHNOLOGY



WideTEK® 24F is by far the fastest CIS flatbed scanner on the market. It completes a full 600dpi color scan of the entire scanning area in less than 4 seconds. During those few seconds, the image is compressed and sent over the network, all while the competitor's product is still working on its 200dpi scan.

*Using the latest camera technology this scanner exceeds all criteria set forth in the FADGI *** guidelines, Metamorfoze Light and ISO 19264-1 level B.*

Solid, Edge to Edge Glass Top Flatbed Scanner

Scratch resistant glass plate for scanning oversized originals

WideTEK® 24F is extremely fast and delivers high resolution color, black and white or grayscale images in jpeg, tiff, pdf and most other standard image output formats. It is the newest addition to the Image Access family of large format flatbed scanners. Incorporating the latest camera technology and illumination techniques, it is not only extremely fast but also scans highly accurately at resolutions up to 1200 dpi but is still an affordable solution.

WideTEK 24F features a solid glass plate protecting the scanner from being exposed to dirt and dust, wet ink or paint, or any other objects. Because the glass top extends from edge to edge, it allows scanning of oversized objects and supports thicker objects with the adjustable height of the scanner's lid. The lid is not only adjustable but can also be removed completely.

The scanner needs less than four seconds to scan the largest format of 18 x 24 inches in plain mode at 600dpi resolution. The 1200dpi resolution provides details of the scanned document not even visible to the human eye.

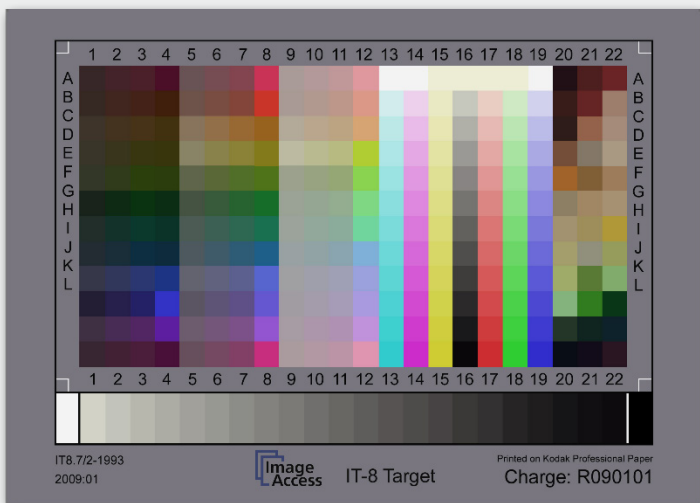
Operate the scanner either with a standard web browser, the built in touchscreen or a mobile device like an iPad or Android tablet, using our application for mobile devices Scan2Pad®.

Further highlights that make the WideTEK® 24F scanner the right choice for every application:

- Scan2USB – Walk up scanning to a USB device
- Scan2Print – Copy to networked printers or hot folders
- Scan2Pad® – Operation via tablets or other mobile devices
- Scan2Network – Output to network resources, SMB, FTP
- Output formats: PDF, PDF/A, JPEG, TIFF, PNM, multipage PDF and TIFF, DICOM and many more
- Virus resistant Linux OS
- OS independent, runs with Windows 8, 10, Linux, Mac
- ScanWizard uses any browser: IE, Safari, Chrome, Firefox
- Remote maintenance, troubleshooting and firmware updates
- Wide color gamut, supports sRGB, Adobe RGB, native RGB

Options:

- Batch Scan Wizard for high volume scanning
- Attach external monitor for instant previews
- Scan2OCR – Background OCR option for Scan2Net scanners (Only in connection with ScanWizard)
- Full Coverage Warranty – Up to 5 years, free spare parts & more



The color space of the WideTEK 24F is much wider than sRGB



Scratch resistant glass plate enables scanning oversized originals

Markets and Applications

WideTEK® 24F, a valuable production device for numerous markets.

WideTEK® 24F Markets

- Architecture, Engineering, Construction, CAD
- Copy Services, Reprographics
- Mapping Services, GIS
- Media Control, Press Clipping Services
- Universities, Libraries, Registries
- Inspection and industrial quality control

The applications are many and diverse. WideTEK® 24F fits nearly any application where you need wide format, production speed and quality.

WideTEK® 24F Applications

- Scanning maps, color posters, display graphics, artwork, photographs
- Archiving newspapers, periodicals, catalogs and magazines
- Scanning drafts and advertising on paper board, photos, fabrics, tiles
- Bound & stapled documents: contracts, accounts and documentation

The Scan2Net® platform is the technological foundation of all WideTEK® and Bookeye® scanners from Image Access. It replaces the proprietary scanner drivers and software that traditional scanners require with the fastest common, nonproprietary inter-device connection available: TCP/IP over Ethernet. With network interface speeds much higher than USB 3.0 or camera link, Scan2Net® devices are able to reach unrivaled performance at extremely low connectivity cost.

Scan2Net® scanners feature a 64 bit Linux based real time operating system, dedicated to scanner specific imaging and mechanical control tasks, maximizing scanning speeds and performance.

Scan2Net® Advantages

- 64bit Linux based computer, fast and virus protected
- Routable, easy integration into existing network structures
- Only a single IP address is required to run the scanner
- Integration and remote access via the Intranet or even the Internet
- Scans directly to SMB, FTP, hot folders, USB, Email or the Cloud
- All hardware and software built in, no need for external PCs
- Simple, intuitive operation via full HD touchscreen
- Clear menu structure, help files build in
- Multilanguage support, customizable user interface

TECHNICAL DATA

Maximum Document Size	610 x 457 mm (24 x 18 inch), 11% more than DIN/ISO A2
Scanner Resolution / Optical Resolution	1200 x 1200 dpi / 1200 x 600 dpi
Scan Speed Color	24 x 18" @ 300 dpi < 4 s, 24 x 18" @ 600 dpi < 4 s, 24 x 18" @ 1200 dpi < 8 s
Color Depth	48 bit color, 16 bit grayscale
Scan Output	24 bit color, 8 bit grayscale, bitonal, enhanced halftone
File Formats	Multipage PDF (PDF/A) and TIFF, JPEG, JPEG 2000, PNM, PNG, BMP, TIFF (Raw, G3, G4, LZW, JPEG), AutoCAD DWF, JBIG, DjVu, DICOM, PCX, Postscript, EPS, Raw data and more
ICC Profiles	Embedded for sRGB, Adobe RGB and native. Individual profiling via web based Scan2ICC subscription.
Quality	Complies to FADGI *** guidelines, Metamorfoze light, ISO 19264-1
Camera	CIS line sensor with long focal selfoc lens, depth of focus > +/-1mm @600dpi
Light Source	RGB LEDs, with integrated diffusor tested according to IEC 62471, no IR/UV emission
Lamp Life Time	50,000 hours typical. Lamps are covered by the Extended Warranty Option
Computer	64 bit Linux, Intel® Core™ i3 generation 8 processor, 240GB SSD, 8GB memory for extra large jobs
Touchscreen	7.5 inch 1280*800 multitouch screen
USB Port	1 USB 3.0 Port
Interface	1 GBit Fast Ethernet with TCP/IP based Scan2Net® Interface
Dimensions / Weight	H x W x D: 140 x 730 x 900 mm (5.5 x 29 x 36 inch) / 28 kg (62 lbs.)
Electrical Specification	100 – 240 V AC, 47 – 63 Hz (external power supply, complies with ECO standard CEC level VI)
Power Consumption	< 0.5 W (Sleep) / 2.5 W (Standby) / 35 W (Ready to scan) / 70 W (Scanning)
Environment	Operating temperature 5 to 40 °C (40 to 105 °F), relative humidity 20 to 80% (non-condensing)
Noise	< 42 dB(A) (Scanning) / < 25 dB(A) (Standby)
Approvals	IEC/EN 62368-1:2014 Ed.2, AUS/NZL 62368-1:2014 Ed.2 UL 62368-1:2014 Ed.2, CSA 62368-1:2014 Ed.2, RoHS, WEEE



Large Document Solutions

7318 S. Revere Pkwy., Suite A-1 • Centennial, CO. 80112
(303) 773-9015 • (866) 338-4464 toll-free

info@largedocuments.com • www.largeformatscanners.com