



Distributed by Paradigm Imaging Group

**LARGE
DOCUMENT
SOLUTIONS**

Large Document Solutions

7318 S. Revere Pkwy., Suite A-1
Centennial, Co. 80112
(303) 773-9015
(866) 338-4464 toll-free
info@largedocuments.com
www.largeformatscanners.com



Kurabo Large Format Flatbed Color Scanners

K-IS-A1FW, K-IS-A1FW Plus & K-IS-A0FW

Capture your fragile documents and artwork with uncompromising image quality and professional standards with the Kurabo series of flatbed color scanners. Kurabo offers 3 models in 2 sizes of full color wide format flatbed scanners with scan areas of 36 inch \times 50 inch and 24 inch \times 36 inch, with super scan speeds. A single CCD sensor and single camera system provides a seamless image without the need for stitching. The Kurabo flatbed color scanner is used for digitizing a wide range of documents, such as maps, atlas, charts, street maps, large books, fragile historical records, textiles, art objects, fine art work and various 3D objects. The Kurabo scanner series can capture a wide variety of documents and objects fast, accurately and efficiently!

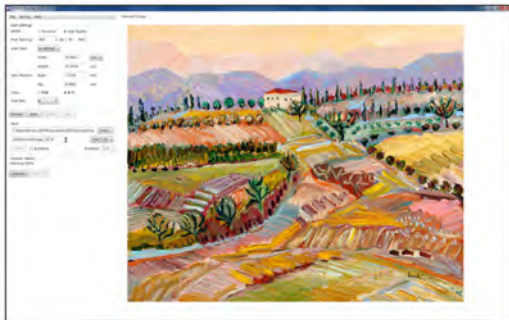
Basic Specifications

1 Year Limited Warranty

	K-IS-A1FW Flatbed	K-IS-A1FW Plus Flatbed	K-IS-A0FW Flatbed
Scanner type	Adjustable Dual White LED (forward and backward) Control of Individual light intensity. (0% ~ 100%)		
Light source	Adjustable Dual White LED (forward and backward) Control of Individual light intensity. (0% ~ 100%)		
Sensor	RGB 3-line, Single CCD		
Document size	24"x36"		36"x50"
Resolution	400 dpi optical, 800 dpi max	800 dpi optical, 1600 dpi max	1000 dpi optical, 2000 dpi max
Scan speed	20 seconds for a D-size original		17 seconds for a E-size original
Accuracy	+/-0.1% +/-1 pixel		+/-0.05% +/-1 pixel
Pixel gradation	16 bits for each red, green and blue		
Output data	RGB 24bit Gray (16/8bit)		RGB 24/36bit Gray (16/8bit)
Interface	1000 base-T (IEEE 802.3ab) network connection		
Interface Cable	Category 6 or higher		
Network Interface Card	Intel Pro/1000 included		
Host platform	Windows XP 32bit, Windows Vista-32/64bit, Windows 7/8/10 - 32/64bit architectures		
Physical Dimensions	W: 62" x D: 32" x H: 41"		W: 74" x D: 49" x H: 32"
Weight	Approximately 485 lbs.		Approximately 620 lbs.
Power supply	AC 100 - 240V @ 50/60Hz @250VA		
Operating Environment	15 - 30 degrees Celsius / 30 - 75 % RH (non-condensing)		

Included Software

Scanning Software



The Scanning Software features an intuitive scanning interface for the Kurabo flatbed scanner to scan, preview and view documents. It allows users to quickly set parameters such as standard or high quality scanning modes, resolution, document size, precision start position for scanning a certain part of an original, color and b&w modes, and the pixel depth of your output files. The software also features Array View Lite viewer that offers tools such as crop, zoom and a tonal adjustment curve. The viewer provides an information palette displaying critical document properties and the capabilities to invert images, adjust scaling, increase or decrease sharpness and change the brightness and contrast of the displayed image.

The Flatbed Scanning Software is a complete turn-key scanning interface that enables users to start scanning and saving documents in a matter of minutes, giving you full control over your scanning workflow.

Runs in native 64-bit for optimal performance.

Optional Software

Aupier-GigaStitch

Aupier-Gigastitch is a professional image editing & stitching software that allows you to stitch and join multiple sections of scanned images such as large maps, drawings and aerial photographs, to create one image. A variety of robust editing tools are also available to make changes on scanned images using a simple and user friendly interface. Main functions include Color Adjustment, Increase/Decrease color, Size, Trimming, Deskew, Rotate, Mirror, Sharpening, Blur, Noise, Erase Outside, Stitching, Clipping Pass, Save joined images, Save One Image, Batch processing and Print. Aupier-Gigastitch is a comprehensive image editing tool designed for both casual and professional users.

Aupier-GigaLay

Aupier-Gigalay allows users to stitch multiples images together, featuring the capacity to handle extra large files that are over 10m long and 1GB in size, with advanced optimization for quick high-speed and high-quality output to your large format printer. Advanced users can also combine raster and vector files to an existing image, enabling a powerful way to synthesize photographs, maps, drawings and vector data all in one document.



Large Document Solutions
 7318 S. Revere Pkwy., Suite A-1
 Centennial, Co. 80112
 (303) 773-9015
 (866) 338-4464 toll-free
 info@largedocuments.com
www.largeformatscanners.com