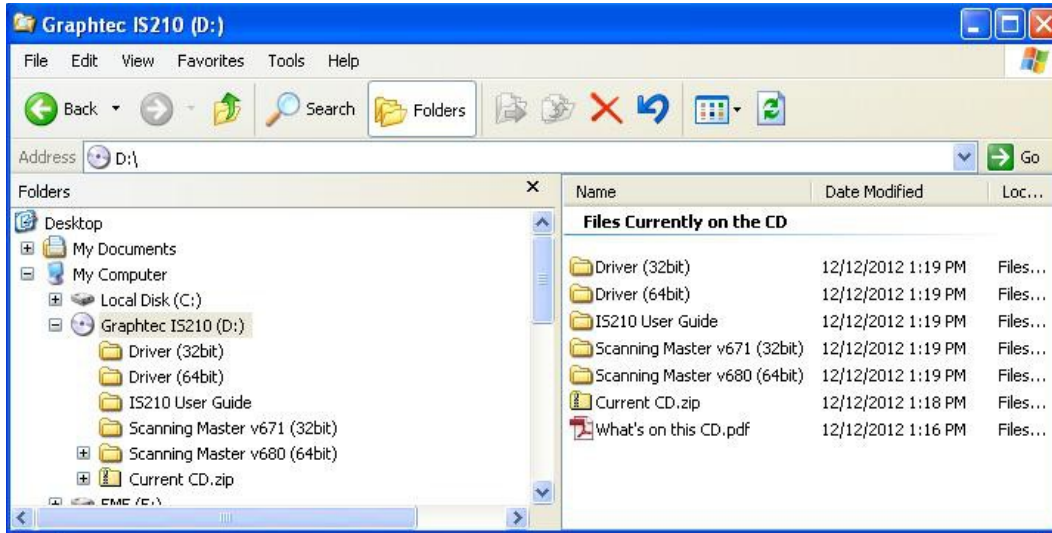


Scanmaster 21+ Installation Instructions

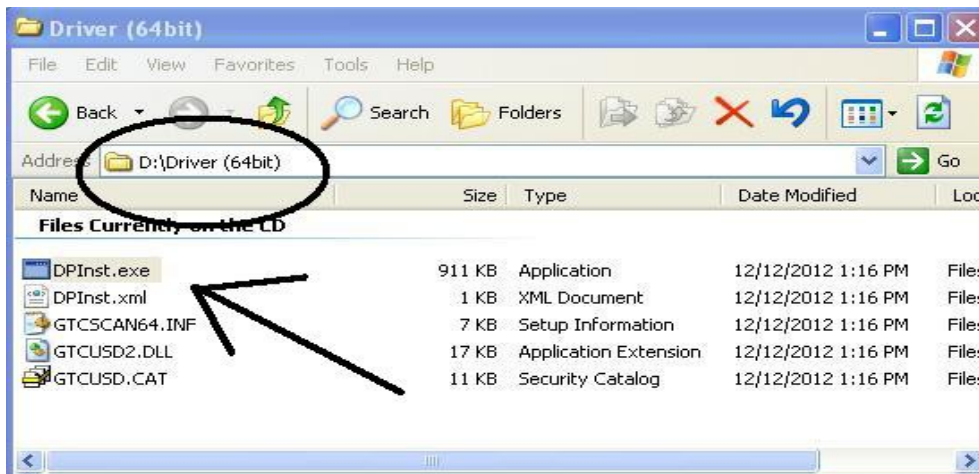


EME Corporation
7318 S. Revere Pkwy, Unit A
Centennial, CO 80112
Toll: (866) 338-4464
Fax: (303) 773-9950
www.largedocumentsolutions.com

- 1) Insert and browse installation CD.



- 2) Select the “Driver (64bit)” or the “Driver (32bit)” and run the install app called **DPIInst.exe**. Windows XP and some Windows 7 installs are 32 bit installs. Check your windows properties to verify your install.



- 3) Follow the prompts until completed.

Scanmaster 21+ Installation Instructions

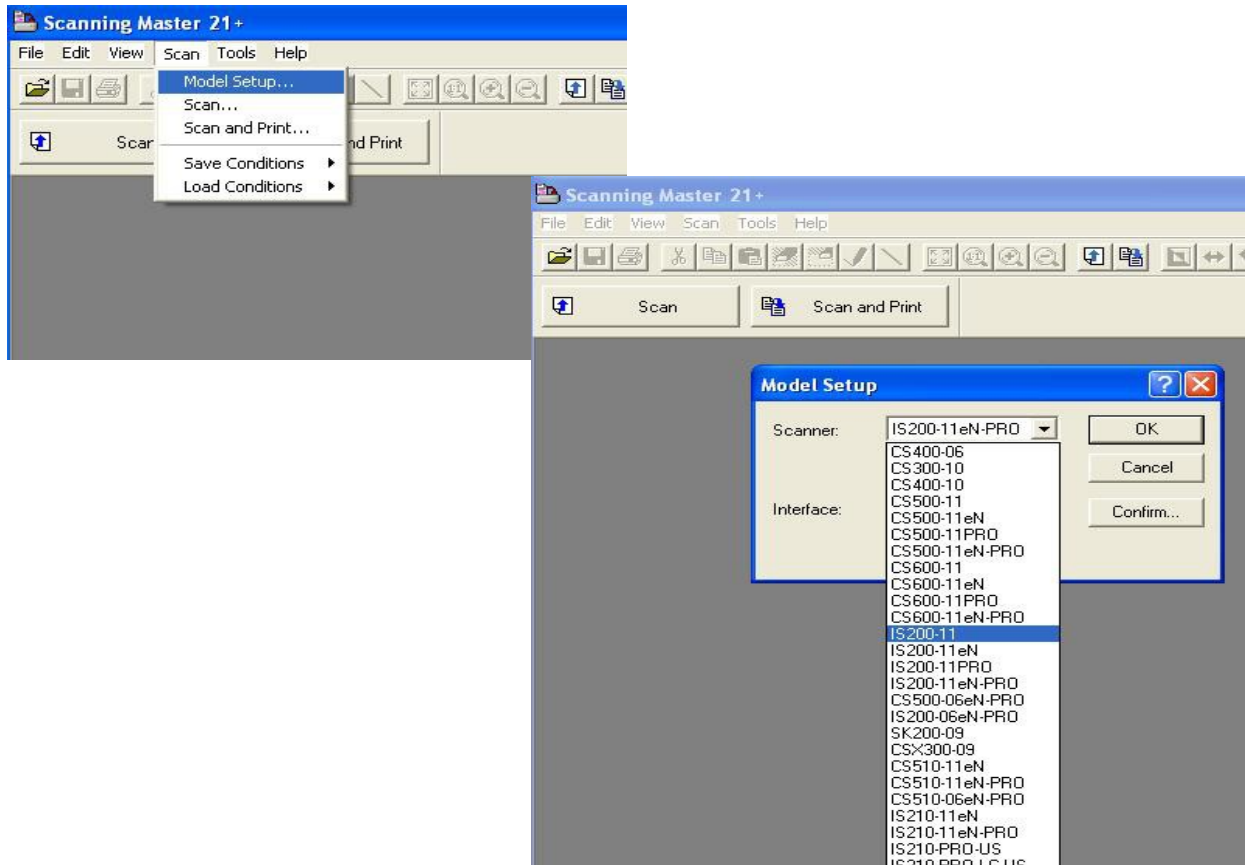


EME Corporation
7318 S. Revere Pkwy, Unit A
Centennial, CO 80112
Toll: (866) 338-4464
Fax: (303) 773-9950
www.largedocumentsolutions.com

- 4) After the software install, go to the “Start Menu” and drill down through “Scanning Master 21+” then start the scanning software.



- 5) Next tell the software what scanner model is connected. Select “Scan”, “Model Setup” then...



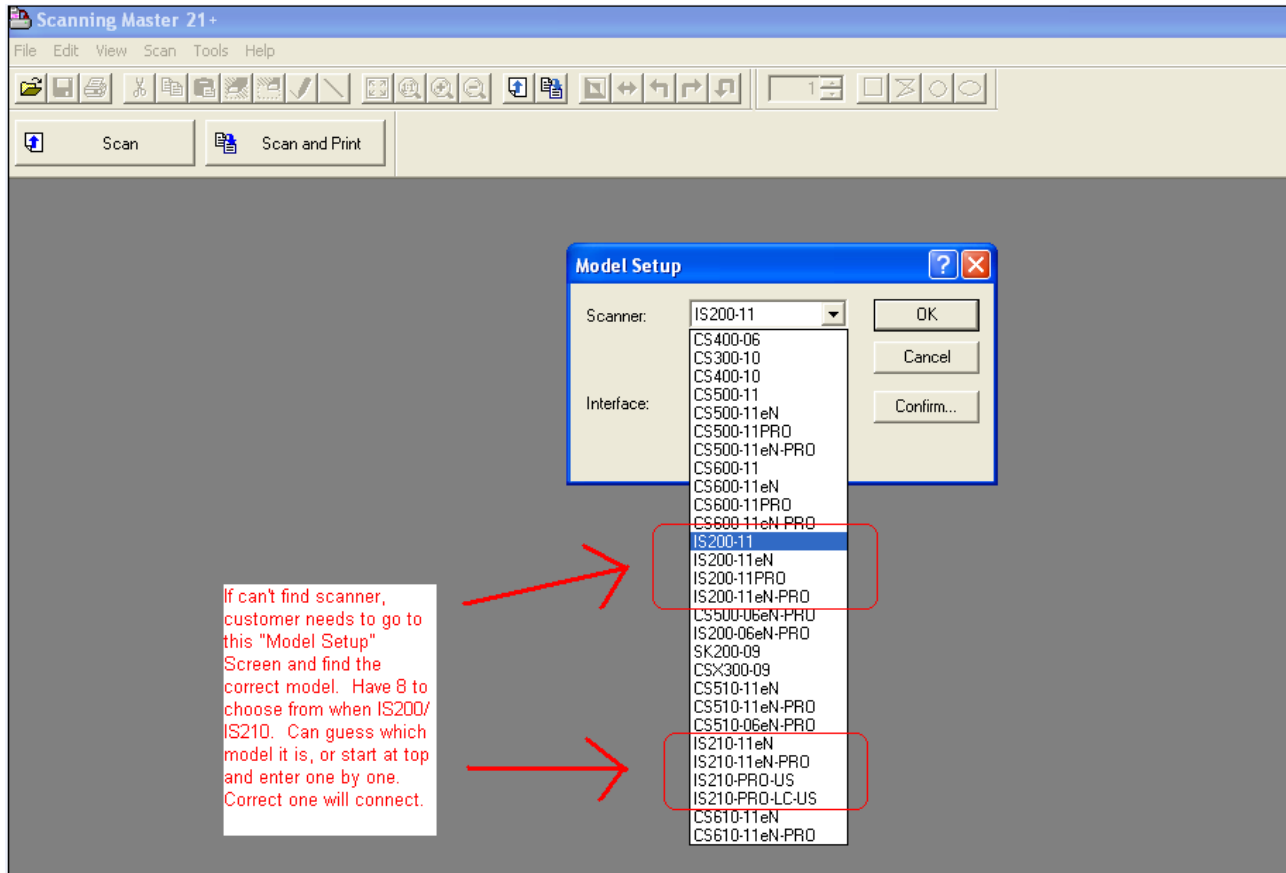
In the Model Setup dialogue box select the appropriate model.

Scanmaster 21+ Installation Instructions



EME Corporation
7318 S. Revere Pkwy, Unit A
Centennial, CO 80112
Toll: (866) 338-4464
Fax: (303) 773-9950
www.largedocumentsolutions.com

- 6) If the scanner gives an error or can't find the scanner, go to the Model Setup Screen (shown below). You can call Large Document Solutions at 866-338-4464 to find out which specific model you have, or for an IS200/IS210, start at the top of the section of 4 scanners. Go one by one down the list until the software tells you it recognizes / can see the scanner. Then you've found the correct model.



You're Ready to Scan.....