

**LARGE
DOCUMENT
SOLUTIONS**

Large Document Solutions
7318 S. Revere Pkwy., Suite A-1
Centennial, Co. 80112
(303) 773-9015
(866) 338-4464 toll-free
info@largedocuments.com
www.largedocuments.com

WideTEK 25

*Compact wide format flatbed scanner
for documents up to 18.5 x 25 inches*



***Faster, smaller, smarter!
World's most compact DINA2
flatbed scanner***



© 2013 / EN



- CCD SCANNER FOR COLOR, GRAYSCALE OR BLACK AND WHITE IMAGES
- SCANS 18.5 x 25 INCHES OR DIN A2 IN LESS THAN 3 SECONDS
- 1200 x 600 DPI OPTICAL
- LED LAMPS, NO WARM UP, IR/UV FREE
- SMALL ENOUGH TO FIT ON ANY DESKTOP
- LARGE WVGA COLOR TOUCHSCREEN FOR SIMPLIFIED OPERATION
- INTEGRATED WALK UP SCANNING SOFTWARE
- TWO USB PORTS AND SCAN2USB FUNCTIONALITY
- AUTOMATIC CROP AND DESKEW
- REAL TIME DISPLAY OF SCANNED IMAGES
- MODIFY IMAGES WITHOUT RESCANNING
- DUST-FREE CAMERA TECHNOLOGY
- EASY INSTALLATION VIA SCAN2NET® TECHNOLOGY



*WideTEK® 25, currently the only wide format flatbed color scanner on the market for professional applications, compact enough for your desktop.
Professional quality, affordable investment*

**Walk up scanning, state of the art LED illumination
WideTEK® 25 delivers optimal scan results**

WideTEK® 25 is extremely fast and delivers high resolution color, black and white or grayscale images in jpeg, tiff, pdf and most other standard image output formats. It combines production-ready design and uniquely compact dimensions in a new class of professional but affordable scanners.

WideTEK® 25 can scan nearly anything: from business cards to diagrams in A2 format, books, newspapers, maps, construction drawings, bound documents and more. The scanner needs less than three seconds to scan the largest format of 18.5 x 25 inches in brilliant quality. Its compact size and integrated walk up scanning software make it the ideal solution for reprographics, copy services, press clipping services as well as in universities, libraries, AEC, and government offices.

Operate the scanner either with a standard web browser, the built in touchscreen or a mobile device like an iPad or Android tablet, using our application for mobile devices Scan2Pad®.

**Further highlights that make the WideTEK® 25 scanner
the right choice for every application:**

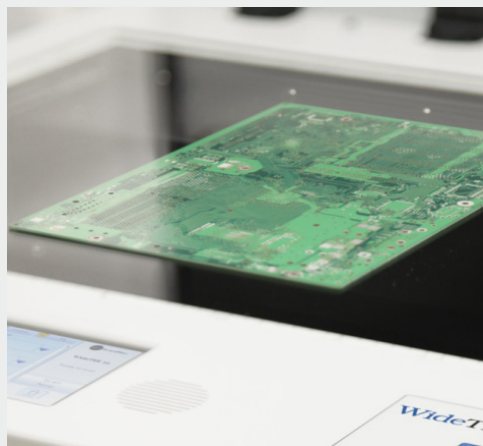
- Scan2USB – Walk up scanning to any USB device
- Scan2Print – Output to any connected printer
- Scan2Network – Output to any network drive
- Scan2Pad® – Operation via tablet or other mobile device
- Virus resistant Linux OS
- Operating system independent, runs with Windows, Linux, Mac OS, Unix. Ready for Windows® 8
- Network scanning via any web browser, i.e. IE, Safari, Chrome, Firefox
- Remote maintenance and troubleshooting
- Firmware updates via web interface
- Includes 12 month Extended Warranty subscription

Options:

- Hardware and software options for high volume scanning
- Extended Warranty – Up to 5 years subscription extended warranty package and free spare parts



Large color touchscreen for simplified operation



Scan anything with the WideTEK® 25 and get high quality images at production scanning speeds.



Markets and Applications

WideTEK® 25, a valuable production device for numerous markets.

WideTEK® 25 Markets

- Architecture, Engineering, Construction, CAD
- Copy Services, Reprographics
- Mapping Services, GIS
- Media Control, Press Clipping Services
- Universities, Libraries, Registries

The applications are many and diverse. WideTEK® 25 fits nearly any application where you need wide format and production speeds.

WideTEK® 25 Applications

- Scanning maps, color posters, display graphics, artwork, photographs
- Archiving newspapers, periodicals, catalogs and magazines
- Archiving blueprints and sepias
- Scanning drafts and advertising on paper board, photos, fabrics, tiles
- Bound & stapled documents: contracts, accounting ledgers, handbooks

The Scan2Net® platform is the technological foundation of all WideTEK® and Bookeye® scanners from Image Access. It replaces the proprietary scanner drivers and software that traditional scanners require with the fastest common, nonproprietary inter-device connection available: TCP/IP over Ethernet. With network interface speeds much higher than USB or SCSI, Scan2Net® devices are able to reach unrivaled performance at very low connectivity cost.

Scan2Net® scanners have a Linux based operating system, dedicated to scanner specific imaging and mechanical control tasks, maximizing scanning speeds and performance.

Scan2Net® Advantages

- Linux based computer, fast and virus protected
- Easy integration into existing network structures
- Only a single IP address is required to run the scanner
- Integration and remote access via the Intranet or even the Internet
- Scans directly to SMB, FTP, Email or the Cloud without external PC
- Simple, intuitive operation, Java and HTML based
- Clear menu structure, operation via touchscreen, acoustical feedback
- Multilanguage support, customizable user interface

TECHNICAL DATA

Maximum Document Size	635 x 470 mm / 18.5 x 25 inch
Optical Resolution	1200 x 600 dpi
Scan Resolution	1200 x 1200 dpi
Scan Speed	Maximum format @ 300 dpi < 3 s Maximum format @ 600 dpi < 6 s
Color Depth	36 bit color, 12 bit grayscale
Scan Output	24 bit color, 8 bit grayscale, bitonal, enhanced halftone
File Formats	PDF, PDF/A, JPEG, PNM, TIFF decompressed, TIFF G4 (CCITT)
Camera	2x Tri-Color CCD camera, 45,000 pixels, encapsulated and dust-proof
Light Source	Two lamps with 108 white LEDs each, no IR/UV emission
Lamp Life Time	50,000 h (typ.)
Interface	1 GBit Fast Ethernet with TCP/IP based Scan2Net® Interface
Dimensions	222 x 760 x 795 mm (8.8 x 30 x 31.3 inch) (H x W x D)
Weight	44 kg (97 lbs.)
Electrical Connection	100 – 240 V AC, 47 – 63 Hz (external power supply, ECO standard CEC level V)
Power Consumption	<= 0.5 W (Sleep) / 2.5 W (Standby) / 90 W (Scanning)
Operating Temperature	5 to 40 °C, 40 to 105 °F
Relative Humidity	20 to 80 % (non-condensing)
Noise	< 45 dBA (Scanning) / < 32 dBA (Standby)



Approvals	ANSI/UL 60950-1, CAN/CSA C22.2 No. 60950-1; IEC 60950-1; FCC 47 Part 15, EN 55022, EN 55024
-----------	---



WEEE

RoHS



Large Document Solutions
 7318 S. Revere Pkwy., Suite A-1
 Centennial, Co. 80112
 (303) 773-9015
 (866) 338-4464 toll-free
 info@largedocuments.com
www.largedocuments.com

Visit our new homepage!

Technical changes, errors and omissions excepted.
 All information subject to change. © Image Access GmbH 2013